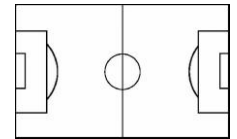
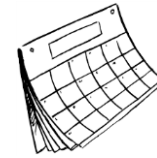




Challenge Youth Academy Program

U9-U10 Girls | 2010/2011 Birth Years

Burroughs Park



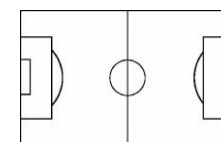
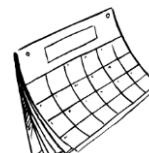
| OPTION | FEE | DETAILS | DURATION | INCLUDED |
|----------------------------|--------|--|--------------------------------------|---------------------------------------|
| Annual (Lump Sum) | \$1100 | Full Amount Due at Registration | Fall <u>and</u> Spring (28 Weeks) | 8-10 Games |
| Annual (Payment Plan) | \$1100 | \$250 Registration \$141.66/month (6 months) | Fall <u>and</u> Spring (28 Weeks) | 2 Practices per Week |
| Seasonal (Lump Sum) | \$550 | Full Amount Due at Registration | Fall <u>or</u> Spring (14 Weeks) | Professional Coaching |
| Seasonal (Payment Plan) | \$550 | \$250 Registration \$150/month (3 months) | Fall <u>or</u> Spring (14 Weeks) | Uniform (1 per year) Insurance |



Challenge Junior Academy Program

U7-U8 Girls | 2012/2013 Birth Years

Burroughs Park



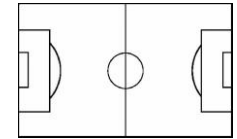
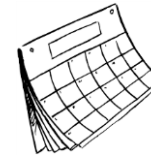
| OPTION | FEE | DETAILS | DURATION | INCLUDED |
|--------------------------|-------|---|--------------------------------------|--------------------------|
| Annual (Lump Sum) | \$500 | Full Amount Due at Registration | Fall <u>and</u> Spring (24 Weeks) | 8-10 Games |
| Annual (Payment Plan) | \$500 | \$250 Registration \$150/month (3 months) | Fall <u>and</u> Spring (24 Weeks) | 2 Practices per Week |
| Seasonal (Lump Sum) | \$250 | Full Amount Due at Registration | Fall <u>or</u> Spring (12 Weeks) | Professional Coaching |
| | | | | Uniform (1 per year) |
| | | | | Insurance |



Recreational Program

U5-U6 Girls I 2014/2015 Birth Years

Burroughs Park



| OPTION | FEE | DETAILS | DURATION | INCLUDED |
|------------------------|-------|------------------------------------|--------------------------------------|---|
| Annual (Lump Sum) | \$350 | Full Amount Due at Registration | Fall <u>and</u> Spring (20 Weeks) | 9 Games 10 Practices Professional Coaching |
| Seasonal (Lump Sum) | \$175 | Full Amount Due at Registration | Fall <u>or</u> Spring (10 Weeks) | Uniform (1 per year) Insurance |